

This As-built EMP Schedule is the final revision of the EMP Dredging Schedule and no further revisions/updates will be issued.

E210 EMP As-built

PoMC

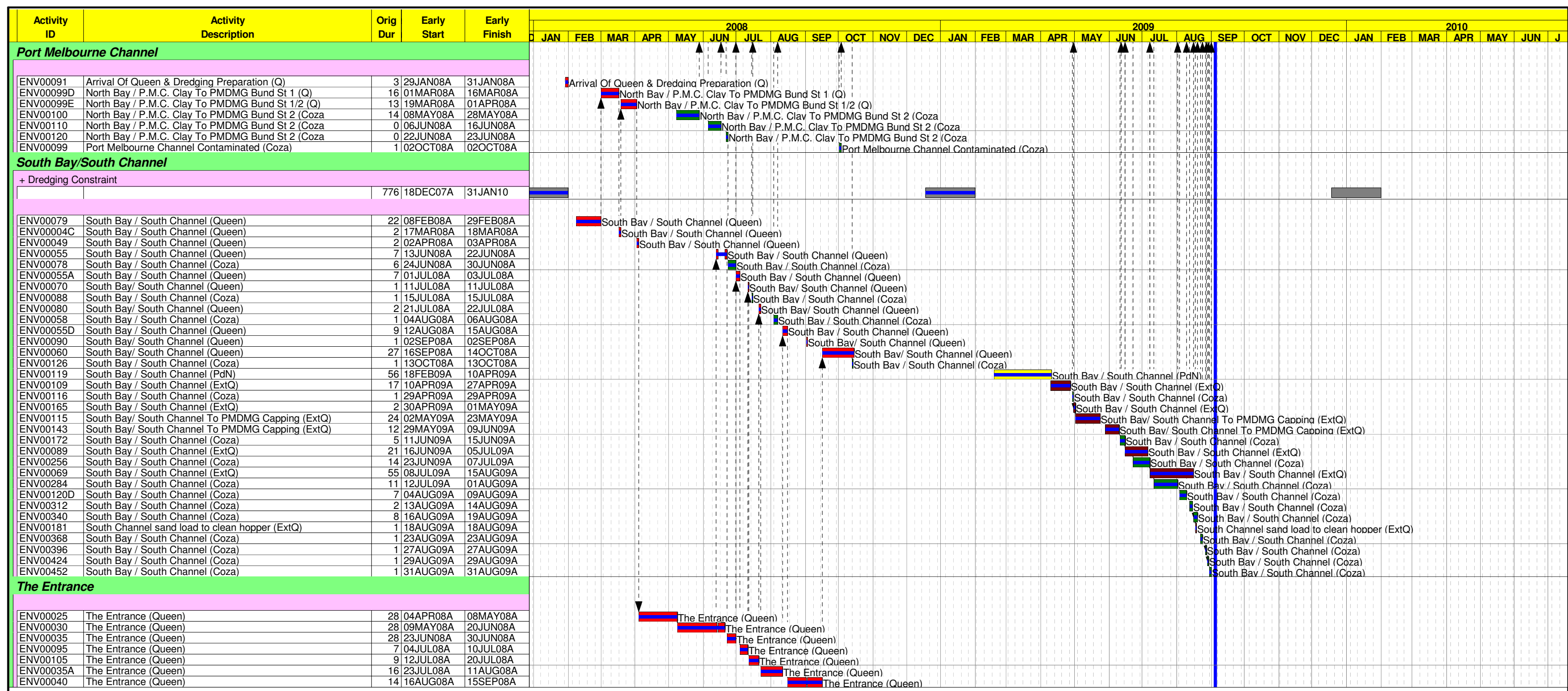
Channel Deepening Project

EMP Dredging Schedule

Sheet 1 of 2

EMP Dredging Schedule

Date	Revision	Checked	Approved
08JUL09	FINAL Rev 2 Upd 6	M Griffin	Nick Easy
17JUL09	FINAL Rev 2 Upd 7	M Griffin	Nick Easy
05AUG09	FINAL Rev 2 Upd 8	M Griffin	Nick Easy
31AUG09	FINAL Rev 2 Upd 9	M Griffin	N v Amstel
07SEP09	FINAL Rev 2 Upd 10	M Griffin	Nick Easy
11SEP09	FINAL EMP As-built	M Griffin	Nick Easy



EMP Dredging Schedule shows actual dredging activity to the report date and planned dredging activity beyond the report date.

Dredging may occur outside planned areas for the purpose of:
 *collection of sand loads from the South Channel to clean hopper during bund construction
 *relocation of dredge vessel(s) due to adverse weather conditions, contingency actions to manage turbidity plume, and/or in response to variations in production rate
 *operational requirements such as maintenance
 These will be reflected in the as-built schedule in blocks of a minimum 2 day duration in the predominant area of dredging.

Environmental limits and seasonal sensitivities have been considered during the development of the EMP Dredging Schedule.

