



## Market Site Demolition Project

Port of Melbourne's development of Market Site, includes an expansion of 29-hectares with the potential to improve heavy vehicle access into and throughout the port. In addition, the site will deliver purpose-built facilities, including new warehousing capacity, empty container storage and an Urban Freight Consolidation Centre. These initiatives reflect Port of Melbourne's and the Victorian Government's commitment to economic prosperity and productivity.

### Progress to date

Demolition works commenced on Wednesday 11 February in the north-west corner of the site. The works are currently being carried out in stages and are on track for completion by the end of Q3 2026, with civil works to commence thereafter.

### Upcoming works – what to expect

**Planning for future works along the northern boundary are currently underway** and appropriate methodology to deliver these works are being explored given the adjacent rail corridor. To avoid impacts to rail operations, some works may be required to be completed outside of standard working hours. Information about specific changes to accommodate these works will be updated in advance, on the [Port of Melbourne website](#).

To ensure the safe removal of materials along the western boundary, there will be a temporary lane closure on **Dock Link Road**, between Dynon Road and Footscray Road (illustrated in red below). These works are scheduled to occur for a short duration between Wednesday 10 June and Friday 12 June 2026, 7:00am - 5:30pm (subject to change).

Two-way traffic will be maintained along Dock Link Road for both northbound and southbound movements, with traffic reduced from four lanes to two during the works. **Delays are expected to be minimal, and safe access will be maintained at all times.**

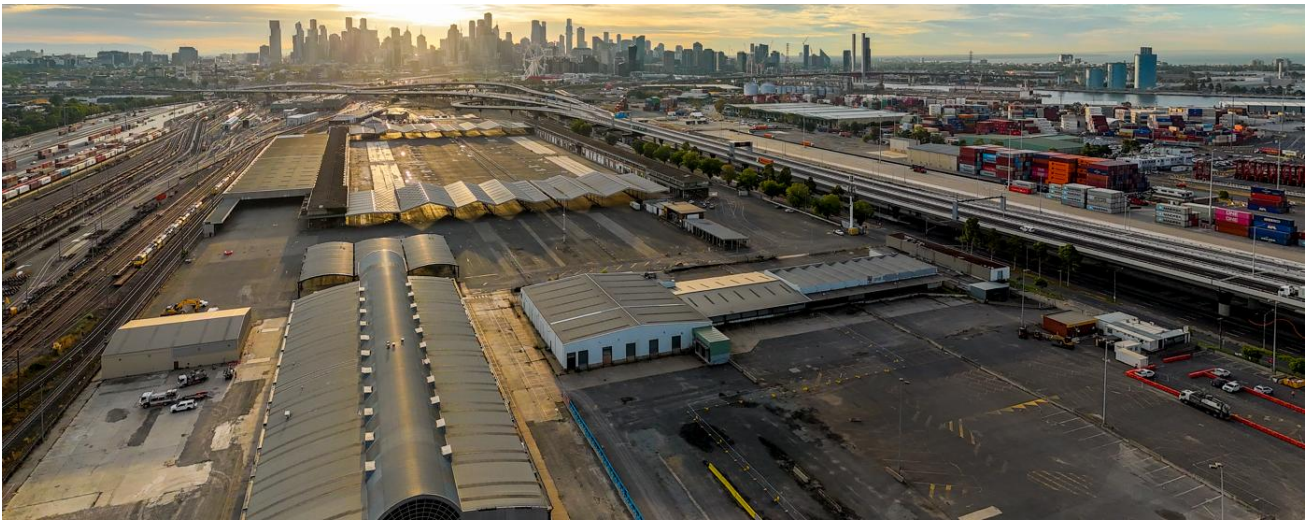
A Traffic Management Plan will be in place and traffic controllers will be on site for the duration of the works.



**Port of Melbourne**

**Phone:** 1300 857 662

**Email:** [Community.Relations@PortofMelbourne.com](mailto:Community.Relations@PortofMelbourne.com)



## Frequently asked questions

<p><b>What to expect</b></p>	<p>The initial phase of the project involves staged demolition and site clearance works within the Market Site precinct, including controlled demolition and removal of materials, waste segregation and making the site safe for subsequent redevelopment.</p>
<p><b>When will the works take place?</b></p>	<p>Works are undertaken from <b>Monday to Friday 7:00am to 6:00pm, and Saturdays 7:00am to 3:00pm.</b></p> <p>Any works outside of these hours, including Sundays or Public Holidays will be communicated in advance of works, when impacts may be minor but unavoidable. Information about changes to working hours will be updated on the <a href="#">Port of Melbourne website</a>.</p> <p>Demolition works are expected to be completed by the end of Q3. Civil works will commence following demolition and will continue through to 2027-28.</p>
<p><b>Environment</b></p>	<p>Demolition works are being undertaken in line with the project’s Environmental Management Plan, which includes but is not limited to noise, air quality, water quality and waste management.</p> <p>Environmental condition assessments are occurring throughout the works program, to support compliance with environmental laws and duties.</p>
<p><b>Noise and air quality</b></p>	<p>Our contractor <i>Symal</i> are ensuring project activities are carried out in accordance with relevant guidelines and requirements.</p>
<p><b>Materials and waste</b></p>	<p>A Symal Waste Management Plan has been developed in accordance with WorkSafe and EPA Victoria requirements.</p>
<p><b>Traffic</b></p>	<p>This site is accessed by authorised passenger and heavy vehicles via the main entry at Footscray Road to the east of Dock Link Road.</p> <p>Heavy Vehicles are complying with “no truck zones” and other road changes implemented as part of the West Gate Tunnel project, to help keep heavy vehicles off residential streets.</p>
<p><b>Further questions</b></p>	<p>If you have any further questions about the works at Market Site, please contact us via phone on <b>1300 857 662</b>, or reach out via email at <b>Community.Relations@PortofMelbourne.com</b></p>