

# Beacon Pile Replacement Program

## Port of Melbourne is undertaking a long-term program of works to improve safety throughout Port Phillip Bay.

Port of Melbourne has 200 Aids to Navigation (AtoNs) which provide navigational assistance to vessel traffic while in port waters, this includes:

- 128 water-based mono-pile beacons including a pile, top structure and light/day mark components:
  - 84 in South and Port Melbourne Channels;
  - 30 in the Yarra River;
  - 10 in the general port area; and
  - 4 in the Bellarine Peninsula;
- 5 water-based multi-pile beacon structures;
- 53 land-based beacons including a structure supported on land and light/day mark components; and
- 14 buoys including anchor block, chain with light/day mark components.

## About the project

Port of Melbourne will be undertaking works to replace 28 monopile beacons in the South and Port Melbourne Channels to ensure the safe navigation of the shipping channels, approaches and berthing places in Port Waters.

As part of the Beacon Pile Replacement Program, stage one of works will be undertaken from July 2024 to April 2025 with the program ongoing until mid-2028.

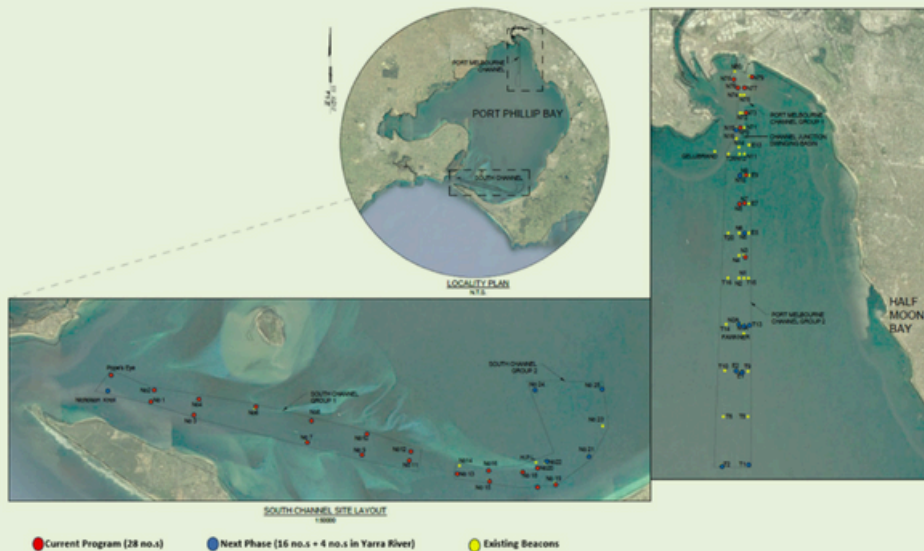
## What to expect

From July 2024 to April 2025 multiple Notices to Mariners will be issued by Ports Victoria for designated areas as works progress.

This will include:

- Port Melbourne Channel
- South Channel

During this period there will be no impacts to shipping or recreational vessels, however a 50-metre clearance and minimum wake and wash will be required to ensure works can be undertaken safely. During South Channel works, you may see our Contractor, Bhagwan Marine, utilising the Blairgowrie Pier for temporary mooring.



## CONTACT US FOR MORE INFORMATION

If you would like to know more about the project, please contact the Project Manager, Chandra Kalidindi at [chandra.kalidindi@portofmelbourne.com](mailto:chandra.kalidindi@portofmelbourne.com) or on 0403 891 369.