



FACT SHEET

Dock Deepening

Expanding Melbourne's Port Capacity

As part of the project to expand Melbourne's port capacity, it is necessary to deepen the dock area at Webb Dock.

Dock deepening will enable ships to berth and manoeuvre with sufficient under keel clearance.

The project will also enlarge the existing 'swing basin' where ships can be turned around and manoeuvred into berth.

Scheduled to start in mid to late 2014, the work at Webb Dock will enable ships to berth with up to a 14 metre draught (i.e. how deep a ship sits in the water) and the works will be governed by a rigorous Environmental Management Plan.

The amount of dredged material and the equipment used will be significantly smaller in scale to the Channel Deepening Project completed by the Port of Melbourne Corporation in 2009. Low impact solutions such as backhoe dredging will be used.

Approximately 2.3 million cubic metres is scheduled to be removed, which represents about one tenth of the Channel Deepening Project volume which was 22.92 million cubic metres.

The plume from the deepening works in Webb Dock is expected to be very low in extent and intensity, and technical assessments indicate that there will be no adverse effect on the water quality or amenity of nearby recreational beaches or fishing areas.

Material removed from Webb Dock will be placed within the existing Dredged Material Ground in Port Phillip Bay. All material to be dredged has been assessed as uncontaminated and does not require capping with sand.

The process will be carried out in strict accordance with the comprehensive environmental requirements developed during the Channel Deepening Project together with the Environmental Management Plan developed for this Project.

The appropriate State and Commonwealth approvals and permits have been received for the deepening works, and the monitoring of operations will be undertaken in accordance with the Environmental Management Plan.

Regular updates on the schedule and activities are published on the Project website.

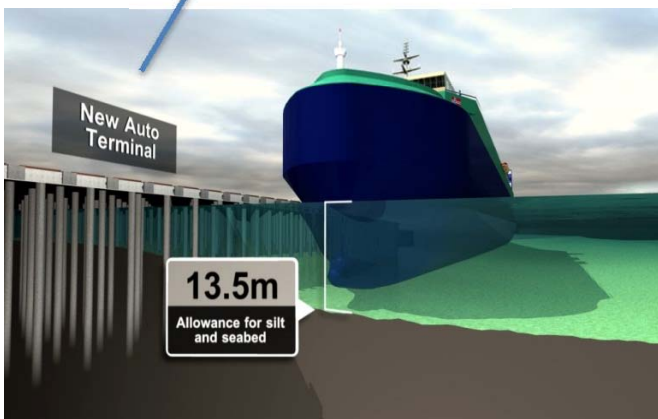
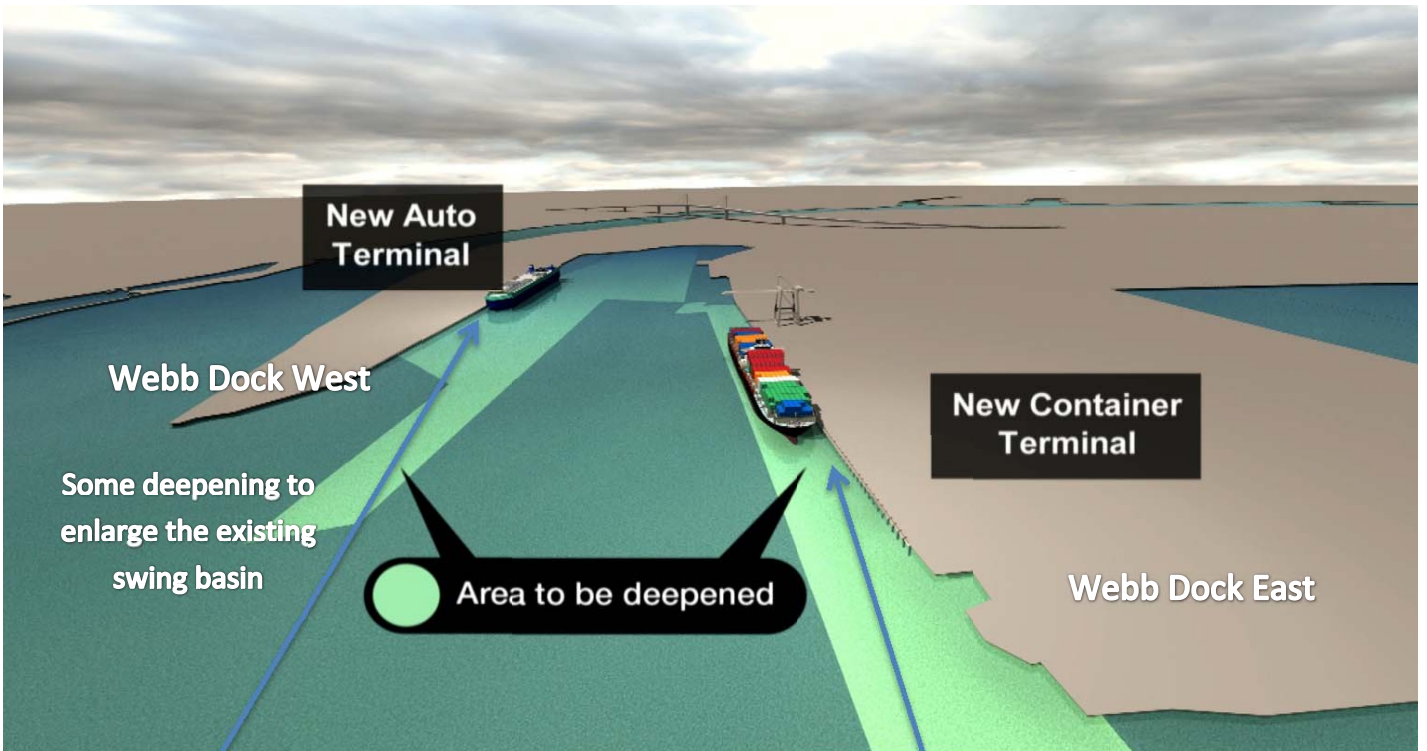
For more information visit portcapacity.portofmelbourne.com.au
or call the Project's 24 hour response line on **1800 451 056**

For daily works updates or to register for free sms alerts visit
<http://portcapacity.portofmelbourne.com/webbdocklive>

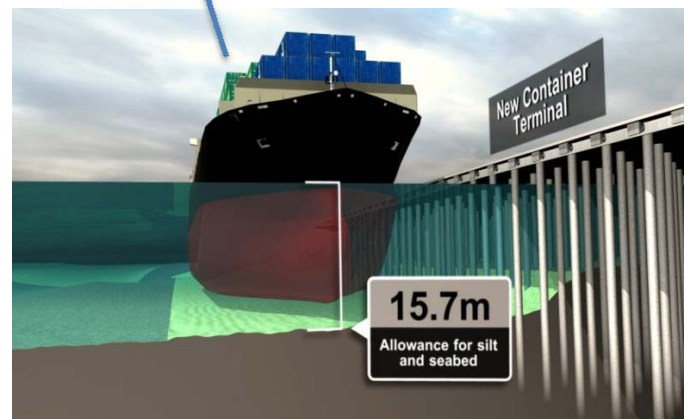


For information: 1800 451 056 or capacity@portofmelbourne.com
portcapacity.portofmelbourne.com

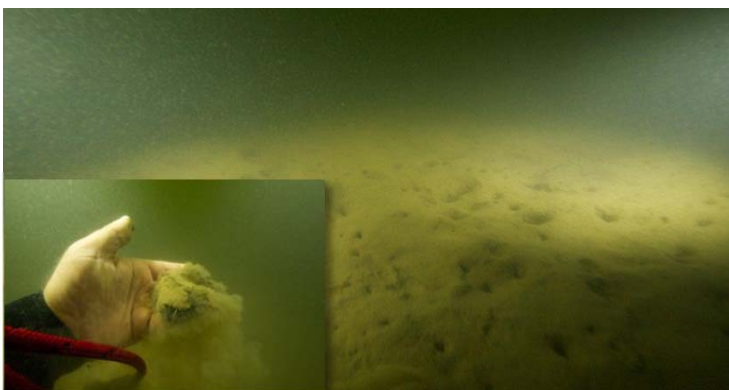
Area to be deepened within the Webb Dock area



Webb Dock West - The new depth of 13.5 metres allows for silt build-up and the seabed contours. The new declared depth will be 12.4 metres compared to the current declared depth of 9.1 metres. Vessels with a draught of up to 11.8 metres can berth.



Webb Dock East - The new depth of 15.7 metres allows for silt build-up and the seabed contours. The new declared depth will be 14.6 metres compared to the current declared depth of 12.5 metres. Vessels with a draught of up to 14 metres can berth.



The Webb Dock seabed (2013)

For more information visit portcapacity.portofmelbourne.com.au or call the Project's 24 hour response line on [1800 451 056](tel:1800451056)